

Specifications

MODEL **GTH-4010**

MEASUREMENTS	Metric	Imperial
Lifting height (max)	9.82 m	32 ft 2 in
Lifting capacity (max)	4,000 kg	8,818 lbs
Lift capacity at maximum height	3,500 kg	7,715 lbs
Lift capacity at maximum reach	2,500 kg	5,511 lbs
Forward reach (max)	6.07 m	19 ft 9 in
Reach at maximum height	0.85 m	2 ft 8 in
A Height	2.45 m	8 ft
B Height at steering wheel	1.84 m	6 ft
C Width	2.25 m	7 ft 4 in
D Inside cab width	0.86 m	2 ft 8 in
E Track	1.85 m	6 ft 1 in
F Wheelbase	2.75 m	9 ft
G Length at stabilisers	4.44 m	14 ft 5 in
H Length at fork-holder plate	6.13 m	20 ft 1 in
I Ground clearance	0.43 m	1 ft 4 in
J Overall width, stabilisers extended	2.93 m	9 ft 6 in
K1 Obstruction angle	37°	37°
K2 Departure angle	39°	39°

PRODUCTIVITY

Lifting/lowering speed	15 sec./12 sec.	15 sec./12 sec.
Extension/retraction speed	22 sec./20 sec.	20 sec./20 sec.
Inside/outside turning radius	2.42 m/4.5 m	7 ft 9 in/14 ft 7 in
Break out force	4,500 kg	9,920 lbs
(with 500L shovel SAE J 732/80)		
Towing capacity at dynamometer	8,200 kg	18,076 lbs
Travel speed	30 km/h	18.6 mph
Gradeability (Unloaded)	40%	40%
(Full Load)	25%	25%
Fork-holder plate rotation	145°	145°
Floating forks	L 1200 mm	3 ft 9 in
	Section 120x50 mm	Section 5 in x 2 in
Tyres (DIN 70361)	405/70-24" PR16 8 holes rim	

POWER

Engine	Duetz Turbo Diesel, direct injection low emissions 4 cylinder Power 60kw (81.5 HP)	
Tank capacities		
Fuel	135 L	29.7 gal
Engine oil	11.5 L	2.5 gal
Coolant	15 L	3.3 gal
Hydraulic oil	150 L	33 gal

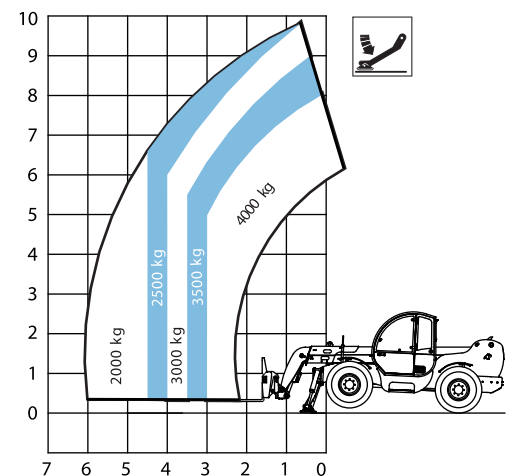
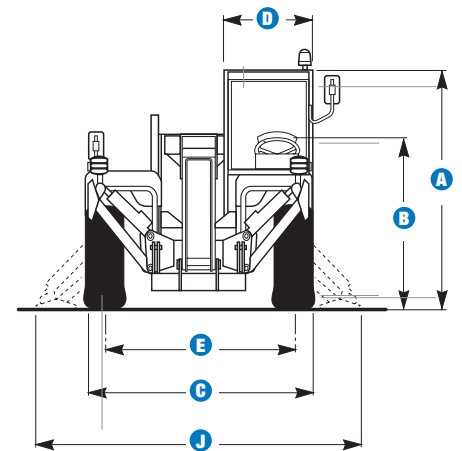
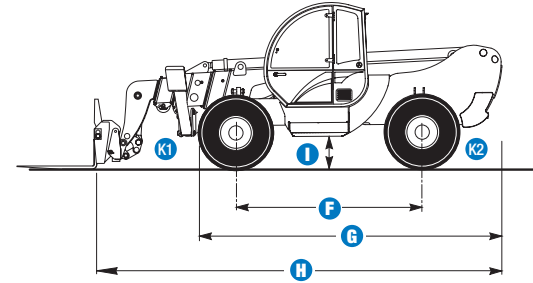
WEIGHT

Weight*	10,260 kg	22,619 lbs
---------	-----------	------------

STANDARDS COMPLIANCE

Operating cab conforms to EEC directives 86/295 (ROPS) and 86/296 (FOPS).

* Weight will vary depending on options and/or country standards **EN1459**
AS1418-19



Lift capacity chart (with stabilisers)

Features

STANDARD FEATURES

MEASUREMENTS

- 4,000 kg (8,818 lbs) maximum lift capacity
- 9.82 m (32 ft 2 in) maximum lift height
- 6.07 m (19 ft 9 in) maximum forward reach

PRODUCTIVITY

- Four-wheel drive
- 3 steering modes:
 - front wheel steer
 - crab steer
 - coordinated steer
- Power assisted steering
- Front hydraulic stabilisers
- Two-speed mechanical gearbox
- Hydraulic proportional distributor
- Multifunction proportional joystick hydraulically piloted
- Limited slip differential
- Floating forks
- Adjustable suspended seat
- Large diameter steering wheel
- Front windscreen wipers
- Oil immersed, multi-disc, self-adjusting brakes on both axles
- Quick coupling for attachment
- Attachment holder plate with hydraulic coupling
- Lockable fuel tank
- Windshield protection grid
- Longitudinal stability control system with:
 - Visual display with coloured LEDs
 - Audible alarm
 - Automatic lockout of boom extension and lowering.

POWER

- Deutz Turbo Diesel 60 kW (81.5 HP)



OPTIONS & ACCESSORIES

PRODUCTIVITY

- Air conditioning
- Adjustable spotlight
- Wiper on cab roof
- Spare wheel
- AM/FM radio with CD player
- Load management system

ATTACHMENT OPTIONS

A large range of attachments are currently available. Please contact Genie or your nearest Genie Telehandler dealer.

Genie Australia

591 Boundary Road, Darra, Qld 4076
PO Box 394, Richlands, Qld 4077
Tel: + 61 7 3375 1660
Toll Free In Australia: 1800 331 660
Fax: + 61 7 3375 1002

European Offices

UK

The Maltings
Wharf Road
Grantham NG31 6BH
UK
Tel: +44 (0)1476 584333
Fax: +44 (0)1476 584334

France

10, ZA de la Croix St. Mathieu
28320 Gallardon
France
Tel: +33 (0)2 37 26 09 99
Fax: +33 (0)2 37 26 09 98

Germany

Finienweg 3
28832 Achim/Bremen
Germany
Tel: +49 (0)4202 8852-0
Fax: +49 (0)4202 8852-25

Spain

Gai' a 31, Pol. Ind. Pl' a d'en Coll
08110 Montcada i Reixac
Barcelona
Spain
Tel: +34 93 572 50 90
Fax: +34 93 572 50 91

Scandinavia

Tagenevägen 72
425 37 Hisings Kärra
Sweden
Tel: +46 31 57 51 00
Fax: +46 31 57 90 20

Genie United States

18340 NE 76th Street
P.O. Box 97030
Redmond, Washington 98073-9730
USA
Tel: +1 425 881-1800
Fax: +1 425 883-3475

WEB: www.genieindustries.com.au

Distributed By: