

524

FOUR-WHEEL DRIVE

90° REAR-PIVOT STEERING

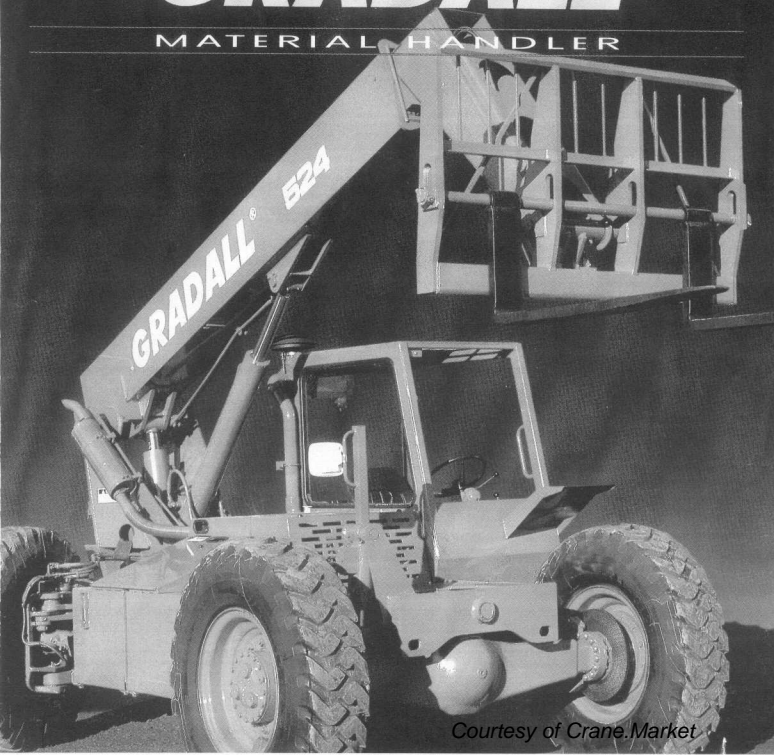
6,000 LB. (2,722 kg) CAPACITY

24 1/2' (7.47 m) LIFT HEIGHT

OR 32' (9.8 m) LIFT HEIGHT

GRADALL®

MATERIAL HANDLER



Courtesy of Crane.Market

524

*6,000 lb. capacity
and absolute
maneuverability in
a compact machine*

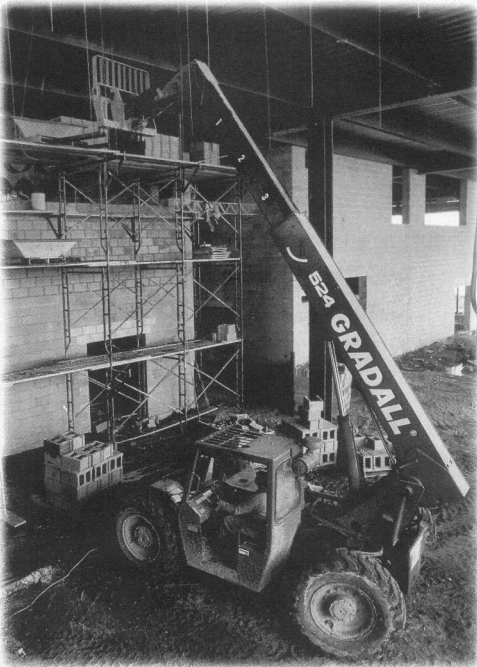
Gradall's 524 Material Handler is designed and built to deliver exceptional construction jobsite performance usually found only in larger machines. With a capacity of 6,000 pounds (2,722 kg) and a maximum lift height of 24 1/2 feet (7.47 m) or 32 feet (9.8 m), the 524 meets the industry's need for a versatile jobsite workhorse that can deliver an exceptional return on investment.

A machine height under 8 feet (2.4 m) enables the 524 to move through low doorways and work on low-overhead jobs. Plus Gradall's proven 90° rear-pivot steering makes maneuverability easy, even on tight jobsites. Turning on an axis instead of in a circle, the 524 has a 0° inside turning radius and an outside radius that's less than the length of the machine. That enables the 524 operator to keep the forks and carriage safely inside the machine's turns and place loads with precision.

Easy to operate

Machine operation also is made easy thanks to Gradall's hydrostatic drivetrain. Simplified no-gear selection operation enables faster startups and smoother inching. All controls are grouped for convenience, and a single-lever control of the lift and crowd facilitates horizontal fork travel.

Jobsite visibility is enhanced with a mid-mounted engine. Better weight distribution, in fact, combines with the low center of gravity and long wheelbase to make the four-wheel-drive 524 a sure-footed performer on rough or muddy terrain. Even the optional two-wheel-drive 522 performs with assurance and ease on most jobsites.



Gradall's sway control lets the operator tilt the entire frame assembly up to 8 degrees in either direction with the loads remaining level.

The simplified, overlapping two-section boom is carefully fabricated of high-strength steel, making the 524 ideal for two-story construction projects. Or, for more reach, a three-section boom option is available. Equipped with the standard Quick Switch® adapter, a 524 operator can switch between cages, forks, buckets and more in just minutes.

Built for reliability

All Gradall Material Handlers are designed and built for exceptional reliability and easy maintenance. Welded frames, rugged axles

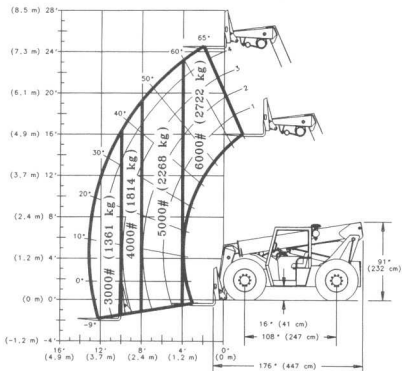
and powerful Cummins diesel engines deliver reliable performance in demanding applications. All service points are within easy reach of ground level, and rear steer axles feature sealed bushings for longer life and less maintenance.

Gradall also maintains a world-wide network of trained service personnel and authorized dealers who can quickly deliver the expertise and parts you need to avoid costly downtime.

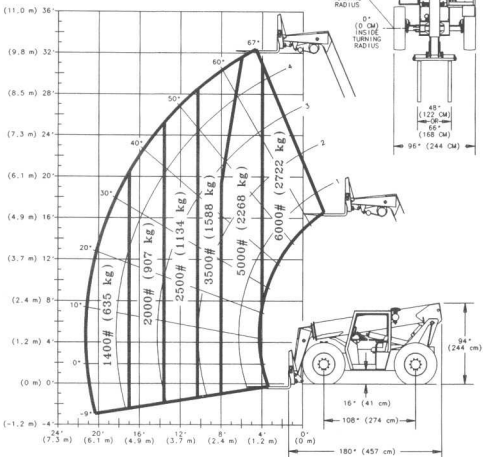
No wonder so many in the construction industry agree that when it comes to versatility, mobility, productivity and durability, nothing matches a Gradall.

Courtesy of CraneMarket

524-2S (2-Section Boom)



524-3S (3-Section Boom)



524 PERFORMANCE SPECIFICATIONS

RATED CAPACITY at 24" (610 mm)
Load Center.....6,000 lb. (2,722 kg)

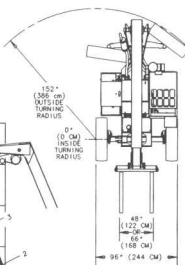
LIFT SPEED (Boom Retracted)
Empty.....121 f.p.m. (36.9 m/min)
Loaded.....79.3 f.p.m. (24.2 m/min)

BOOM SPEED
Extend.....1075 f.p.m. (32.8 m/min)
Retract.....131.3 f.p.m. (40 m/min)

TRAVEL SPEEDS Forward & Reverse
MPH km/hr
4WD-2WD.....75-16 (12-25.7)

OPERATING WEIGHT
With 48" (122 cm) Carriage & Forks
524.....15,100 lb. (6,849 kg)

TRACTIVE EFFORT (Loaded)
524.....14,700 lb. (6,668 kg)
@ 1 MPH (1.6 km/hr)



IMPORTANT

Rated lift capacities shown are with machine on a firm, level surface with undamaged, properly inflated tires. Machine specifications and stability are based on rated lift capacities at specific boom angles and boom lengths. If specifications are critical, the proposed application should be discussed with your dealer.

DO NOT exceed rated lift capacity loads, as unstable and dangerous machine conditions will result. DO NOT tip the machine forward to determine allowable load.

Gradall does not approve the use of its material handlers for lifting personnel under any conditions.

ACCESSORIES

QUICK SWITCH® ADAPTER

CAB ENCLOSURE

Lockable, swinging door.
Windshield wiper.

HEATER & DEFROSTER

LIGHT PACKAGE

VANDAL KIT

AUXILIARY HYDRAULIC CIRCUIT

Required for all attachments equipped with cylinders or other hydraulic components.
Consists of valves, controls, hydraulic lines.

COLD START PACKAGE

RADIAL TIRES

LEFT HAND TILT/SWAY CONTROL

ATTACHMENTS

CARRIAGE

48" (122 cm) PIN ON

CARRIAGE

48" (122 cm) QUICK SWITCH

CARRIAGE

66" (168 cm) QUICK SWITCH

SLOPE PILE CARRIAGE

48" (122 cm) QUICK SWITCH

PALLET FORKS

2' x 4' x 48" (5 cm x 10.2 cm x 122 cm)

CUBING FORKS

2' x 2' x 48" (5 cm x 5 cm x 122 cm)

BUCKET

75 CY (57 m³) QUICK SWITCH

BUCKET

1.25 CY (93 m³) QUICK SWITCH

6' VERTICAL MAST

QUICK SWITCH

INSTANT HOOK

QUICK SWITCH

GRADALL®

406 Mill Ave. SW, New Philadelphia, Ohio 44663
Phone (216) 339-2211 FAX (216) 339-8468

GRADALL® 524 MATERIAL HANDLER

DRIVE LINE SPECIFICATIONS:

ENGINE

Make and Model Cummins 4B3.9
Fuel No. 2 Diesel
Cycles 4
No. of Cylinders 4
Displacement 239 cu. in. (3.9 L)
Rated Speed 2500 rpm
Max. Gross BHP 76 HP (57 kw)
Fuel Tank 40 gal. (151.4 L)

ENGINE FILTERS

Two-stage dry air cleaner - centrifugal pre-cleaner with continuous dust ejector PLUS cleanable and replaceable dry filter element. Visual service indicator.
Replaceable element-type fuel filter/water separator. Full-flow replaceable-element engine oil filter.

ELECTRICAL SYSTEM

Voltage - 12V Alternator - 63 amp Battery - 810 Cold Cranking AMP at 0°F

TRANSMISSION

Self-contained, swashplate design, variable displacement, over center, piston pump.
Neutral start switch.

Full 4-wheel inching (524 only).

2WD - 4WD switch on dash (524 only).

Forward, neutral, reverse lever on left of steering column.

Single foot pedal control provides both braking and inching for lifting while maneuvering vehicle.

Electro/hydraulic traction lock valve for superior tractive effort (524 only).

AXLES

Planetary hubs with piston motors on rear axle (524 only).

Piston motor-driven planetary front axle with high-bias limited slip differential.

BRAKES

Service - Hydraulic dry disc brake on each front wheel.

Hydraulic dynamic braking on front axle and both rear wheels.

Parking - Spring-applied electro/hydraulic release, fail safe.

Light on dash indicates when brake is on.

TIRES

13.00x24 - G2-type (common wheel).

Optional: 13.00R24 radial tires.

STEERING

Hydraulic power steering with manual backup.

Rear wheel steering, 90° pivot around either front tire.

INSTRUMENTS

Volt meter, hour meter, engine oil pressure gauge, fuel gauge, water temperature gauge, horn, back-up alarm.

CONTROLS

Grouped for operator comfort and convenience.

Boom lift and crowd on single joystick.

Right-side tilt and sway levers.

Foot throttle.

Floor mounted traction lock switch (524 only).

Optional: Single-lever tilt/sway control mounted on left side of dash.

HYDRAULIC SYSTEM - DRIVE

5500 PSI closed loop with piston pump and motors.

All hydraulic high pressure connections ORS and Code 62 O-ring flanges.

Integral reservoir with implement hydraulics.

HYDRAULIC SYSTEM - IMPLEMENT

Single-section gear-direct driven from engine.

40 gal. (151.4 L) system capacity.

Two 8 micron filters with visual service indicator and suction strainer.

Lift, crowd, tilt and sway cylinders have safety checks to prevent dropping of load in the event of hose or other hydraulic failure.

This machine is designed to meet specifications of ASME B56.6 - 1992.

It is Gradall Policy to continually improve its products. Therefore designs, materials and specifications are subject to change without notice and without incurring any liability on units already sold.

Form No. 19408

Courtesy of CraneMarket

Printed in US