

**PQ CONTROLLER  
PARTS SUPPLEMENT  
AND  
ELECTRICAL CONNECTIONS**

**JLG COMMANDER SERIES  
SIZZORS LIFT**

<b>P/N</b>	<b>IDENTIFICATION NO.</b>	<b>MODEL</b>
<b>1600100</b>	<b>115-741</b>	<b>CM-20/26 MACHINES W/ARM LEVER SWITCH</b>
<b>1600114</b>	<b>115-833</b>	<b>CM-20/26 MACHINES W/O ARM LEVER SWITCH</b>
<b>1600115</b>	<b>115-832</b>	<b>CM-33/40 RT</b>

**15 JANUARY 1990**

**3120340**

**1600100 Controller Assembly**  
**115-741**

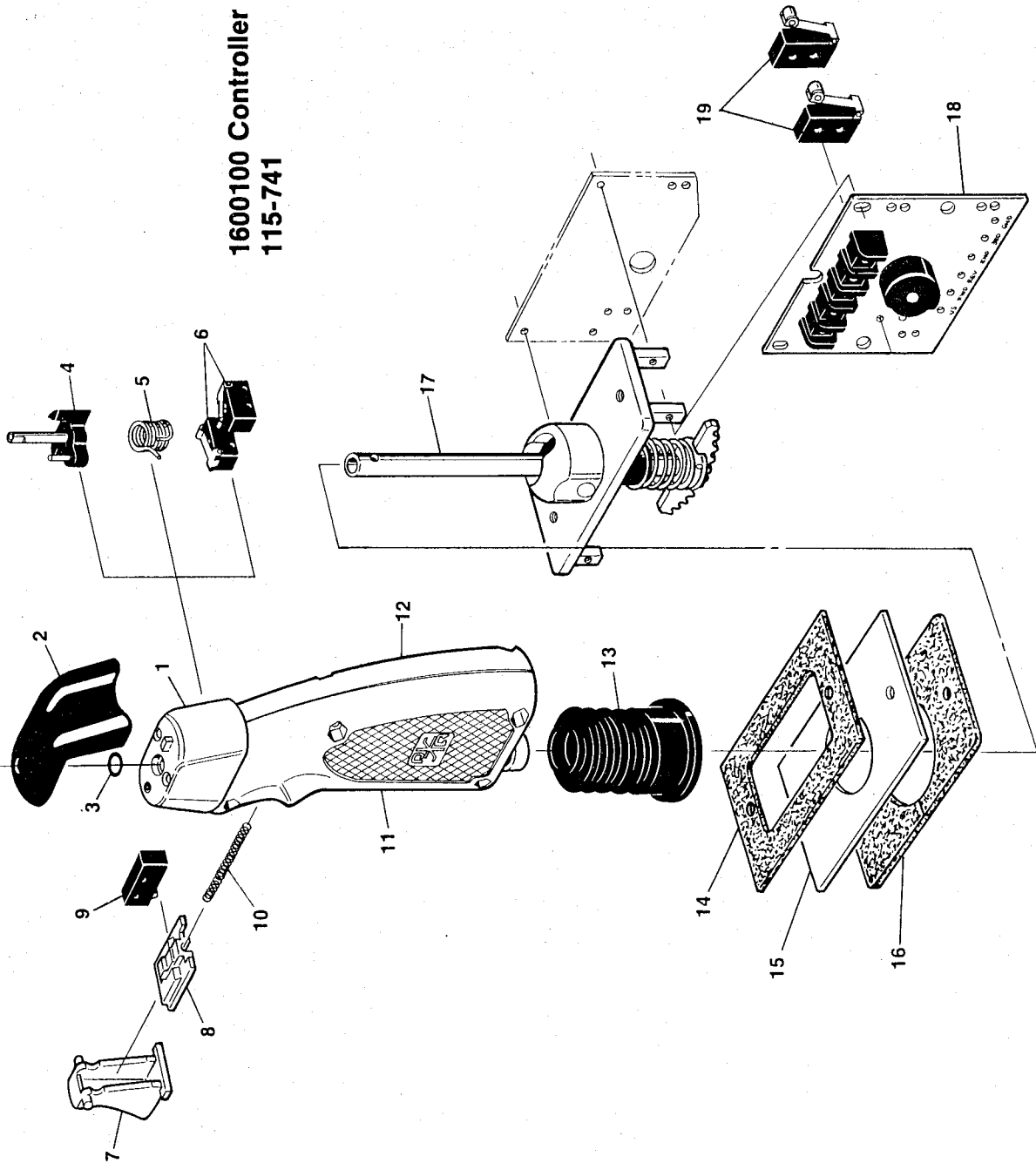


FIGURE & INDEX NO.	PART NUMBER	ITEMS & DESCRIPTION	QTY.	REV.
	1600100	<b>CONTROLLER ASSEMBLY</b>	Ref.	
—1	7003763	Rocker Switch Assembly	1	
—2	7003777	Lever, Steer	1	
—3	7003765	O-Ring	1	
—4	7003766	Activator, Steer Switch	1	
—5	7003767	Spring, Centering	1	
—6	7003768	Switch, Steer Assembly (2 Switches)	1	
—7	7003769	Trigger	1	
—8	7003770	Activator, Trigger Switch	1	
—9	7003771	Switch, Trigger	1	
—10	7003762	Spring, Trigger Return	1	
—11	Not Serviced	Handle, Left	1	
—12	Not Serviced	Handle, Right	1	
—13	7003772	Boot	1	
—14	7003773	Gasket, Upper	1	
—15	Not Serviced	Plate, Mounting	1	
—16	7003774	Gasket, Lower	2	
—17	Not Serviced	Stem/Housing Assembly	1	
—18	7003761	P.C. Board Assembly	1	
—19	7003714	Switch Micro	2	

**1600114 Controller Assembly**  
**115-833**

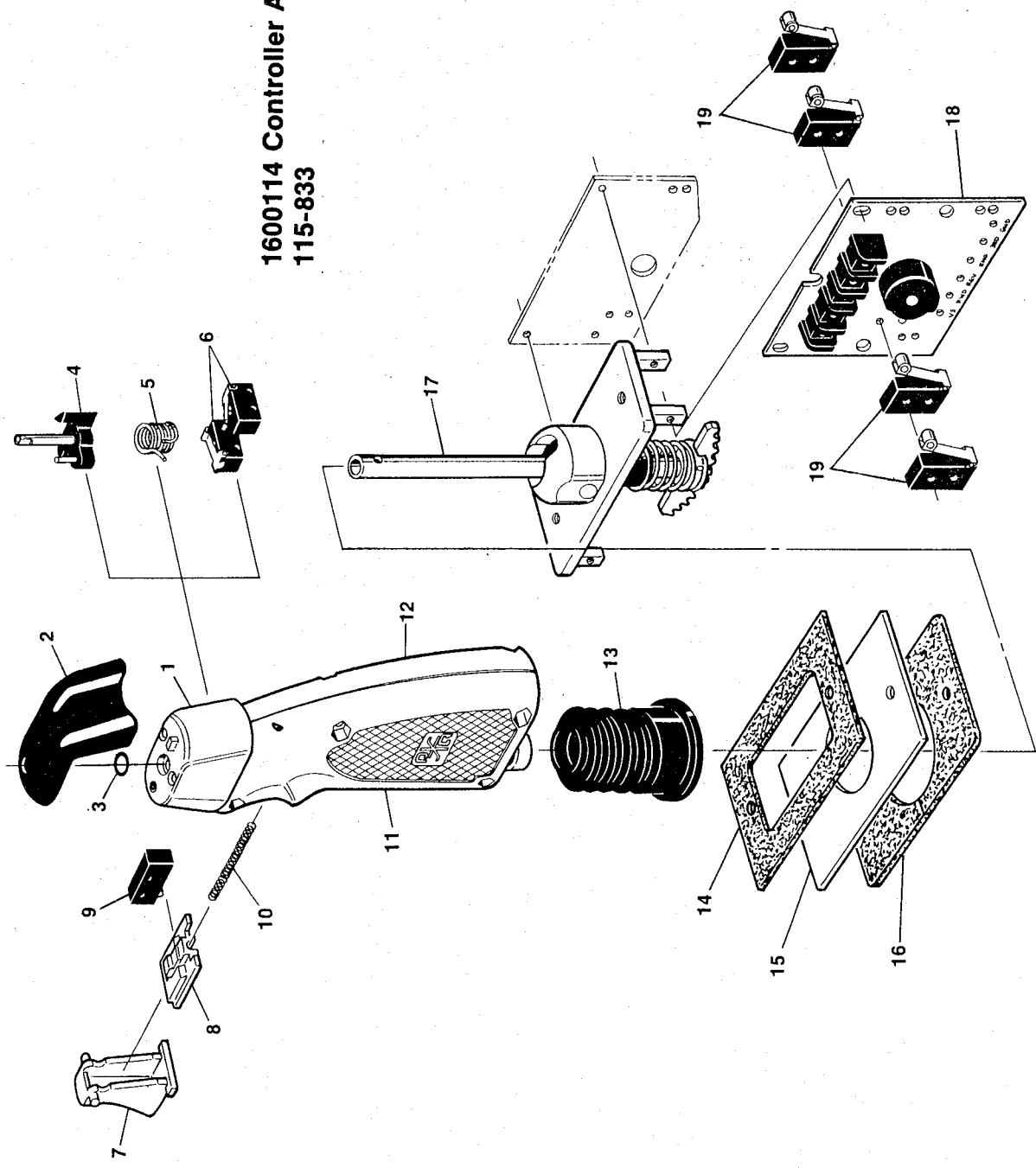
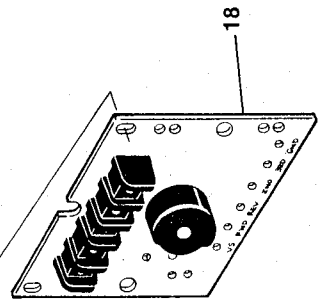
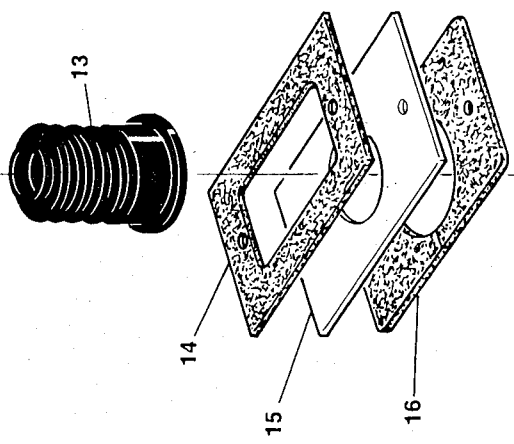
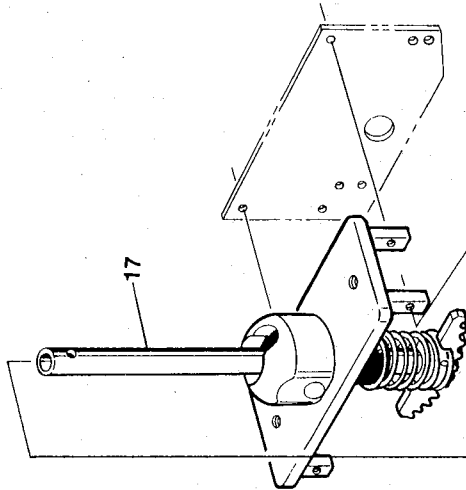
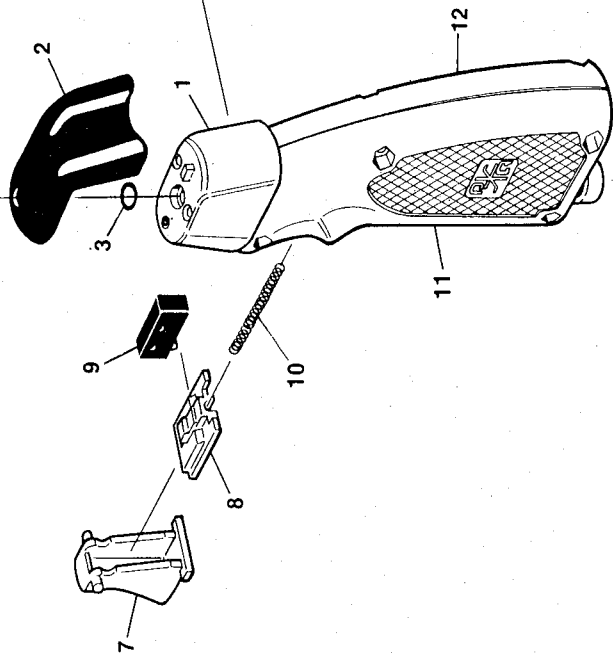
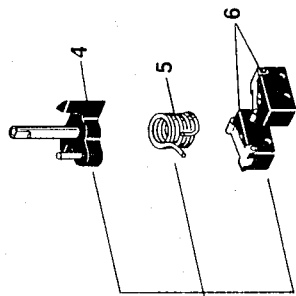


FIGURE & INDEX NO.	PART NUMBER	ITEMS & DESCRIPTION	QTY.	REV.
	1600114	<b>CONTROLLER ASSEMBLY</b>	Ref.	
—1	7003763	Rocker Switch Assembly	1	
—2	7003764	Lever, Steer	1	
—3	7003765	O-Ring	1	
—4	7003766	Activator, Steer Switch	1	
—5	7003767	Spring, Centering	1	
—6	7003768	Switch, Steer Assembly (2 Switches)	1	
—7	7003769	Trigger	1	
—8	7003770	Activator, Trigger Switch	1	
—9	7003771	Switch, Trigger	1	
—10	7003762	Spring, Trigger Return	1	
—11	Not Serviced	Handle, Left	1	
—12	Not Serviced	Handle, Right	1	
—13	7003772	Boot	1	
—14	7003773	Gasket, Upper	1	
—15	Not Serviced	Plate, Mounting	1	
—16	7003774	Gasket, Lower	2	
—17	Not Serviced	Stem/Housing Assembly	1	
—18	7003776	P.C. Board Assembly	1	
—19	7003714	Switch, Mico	4	

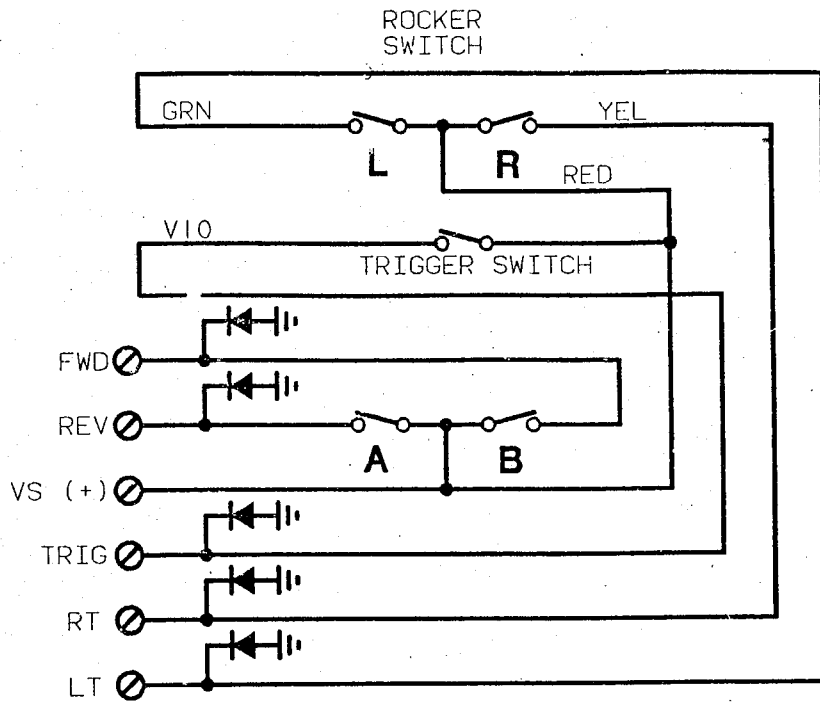
**1600115 Controller Assembly  
115-832**



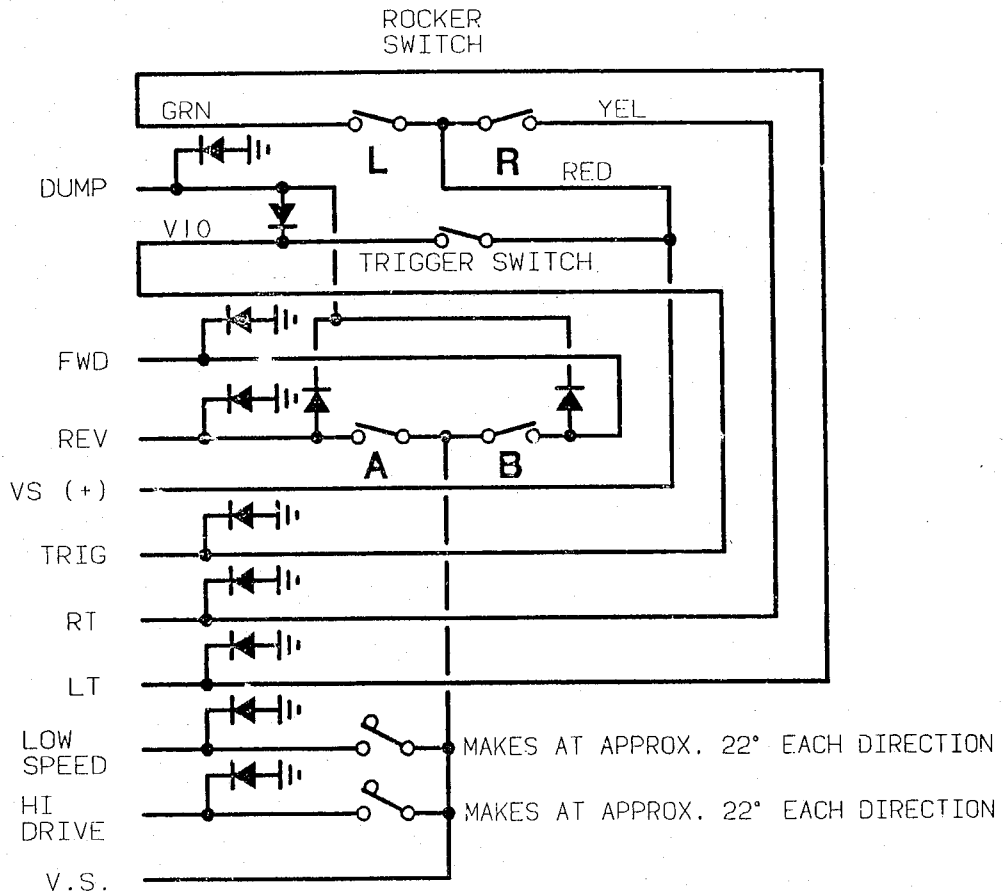
ITEM 20 NOT SHOWN

FIGURE & INDEX NO.	PART NUMBER	ITEMS & DESCRIPTION	QTY.	REV.
	1600115	<b>CONTROLLER ASSEMBLY</b>	Ref.	
—1	7003763	Rocker Switch Assembly	1	
—2	7003777	Lever, Steer	1	
—3	7003765	O-Ring	1	
—4	7003766	Activator, Steer Switch	1	
—5	7003767	Spring, Centering	1	
—6	7003768	Switch, Steer Assembly (2 Switches)	1	
—7	7003769	Trigger	1	
—8	7003770	Activator, Trigger Switch	1	
—9	7003771	Switch, Trigger	1	
—10	7003762	Spring, Trigger Return	1	
—11	Not Serviced	Handle, Left	1	
—12	Not Serviced	Handle, Right	1	
—13	7003778	Boot	1	
—14	7003773	Gasket, Upper	1	
—15	Not Serviced	Plate, Mounting	1	
—16	7003774	Gasket, Lower	2	
—17	Not Serviced	Stem/Housing Assembly	1	
—18	7003779	P.C. Board Assembly	1	
—19	Not Used			
—20	7003780	Pot. Electrical Assembly	1	

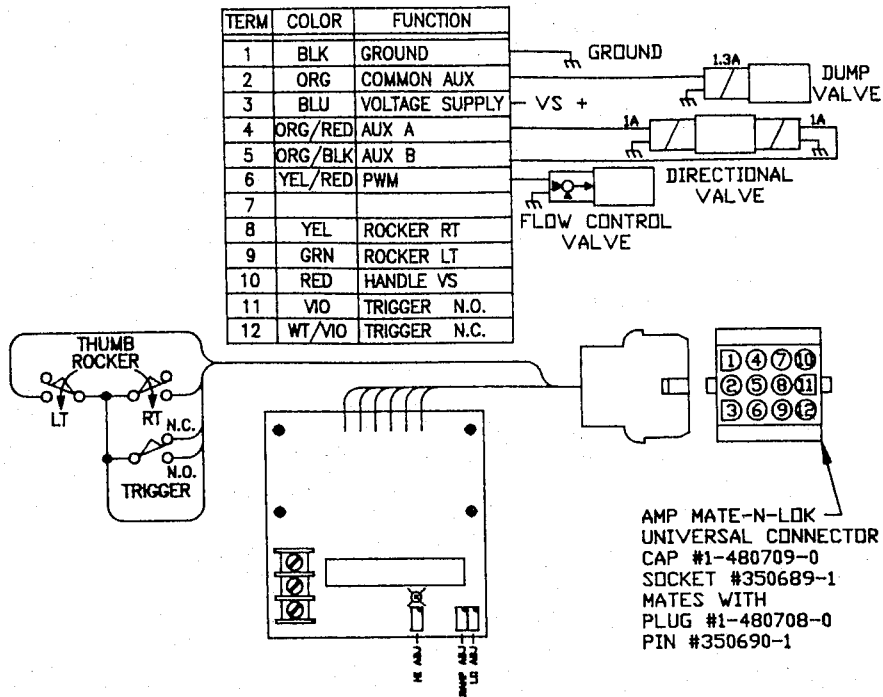
### ELECTRICAL CONNECTIONS 1600100 (115-74)



### ELECTRICAL CONNECTIONS 1600114 (115-833)



## ELECTRICAL CONNECTIONS 1600115 (115-832)



- NOTES: 1) VOLTAGE SUPPLY IS TO BE +12VDC.  
 2) WITH A 9.2 OHM VALVE COIL CONNECTED BETWEEN TERM 6 & GND, THE CURRENT OUTPUT WILL RANGE FROM 400 TO 1000mADC. PWM FREQUENCY = 180-250Hz.  
 3) CONTROL HANDLE IS SPRUNG TO CENTER POSITION.  
 4) TURNING ADJUSTMENT SCREWS CW INCREASES ALL TRIMPOT FUNCTIONS.  
 5) ELECTRONICS ARE EPOXY POTTED.  
 6) AUX A & B OUTPUTS SWITCH ON V SUPPLY SIMULTANEOUS WITH PROPORTIONAL OUTPUT. CURRENT IS LIMITED TO 1 AMP.

