



Model 644E-42 TELEHANDLER

Performance

- Rated Capacity**
6,000 lb (2,722 kg)
- Maximum Lift Height**
42 ft (12.8 m)
- Frame Leveling**
12 degrees
- Lift Speed (boom retracted)**
Up: 12.5 sec
Down: 11.5 sec
- Boom Speed (no load)**
Extend: 12.5 sec
Retracted: 13.5 sec
- Travel Speed Forward**
20 mph (32 kmph) max.
- Drawbar Pull (loaded)**
18,600 lb (8,437 kg)
- Operating Weight** With 50 in. Carriage and Forks
24,467 lb (11,098 kg)
- Forward Reach**
35 ft 6 in. (10.8 m)
- Horizontal Load Placement**
80 in. (2.0 m)

Standard Specifications

- Engine**

Make and Model	Cummins B4.5T Turbo
Fuel	Diesel
Cycles	4
No. of Cylinders	4
Displacement	276 cu in (4.5 L)
Torque Rating	305 lb ft (414 Nm) @ 1,500 rpm
Rated Speed	2,500 rpm
Max. Gross BHP	99 hp (74 kW)
Fuel Tank	46 gal (174 L)
- Engine Filters**
Two-stage centrifugal air cleaner.
Serviceable fuel filter/water separator.
Full-flow replaceable-element engine oil filter.
- Electrical System**
Voltage: 12V
Alternator: 65 amp
Battery: 850 cold cranking amps at 0°F
- Transmission**
Modulated powershift with integral full gear-drive dropbox.
4-speed forward and 3-speed reverse.

- Axles**
Full-time planetary 4-wheel drive.
Limited slip front differential.
Stabil-Trak rear axle stability system.
- Service Brakes**
Inboard mounted internal wet disc brakes.
- Parking Brakes**
Spring applied, hydraulically released parking brake with transmission declutch feature.
- Tires**
Standard: Air Filled 13:00x24 — 12 ply
- Fenders**
- Cab**
Certified ROPS/FOPS structure.
Steering wheel mounted horn and back-up alarm.
Rear view mirrors.
- Steering**
4-wheel circle, 4-wheel crab, 2-wheel front.
- Instruments**
Hydraulic oil temperature, fuel level, tachometer, and hourmeter gauges.
Warning indicators for transmission oil temperature, hydraulic oil temperature, engine oil pressure, alternator charging, air filter restriction, hydraulic oil filter restriction, and low brake pressure.
Indicators for parking brake, and Stabil-Trak System.
- Controls**
Multi-function, fully proportional pilot operated joystick controls for boom functions, carriage tilt, auxiliary control, frame leveling, and horizontal load placement system.
- Hydraulic System**
Load sensing dual gear pump.
50.2 gal (190 L) system capacity.
- Auxiliary Hydraulics**
Used for all attachments equipped with cylinders or other hydraulic components.
Consists of valves, controls and hydraulic lines.

Accessories & Options

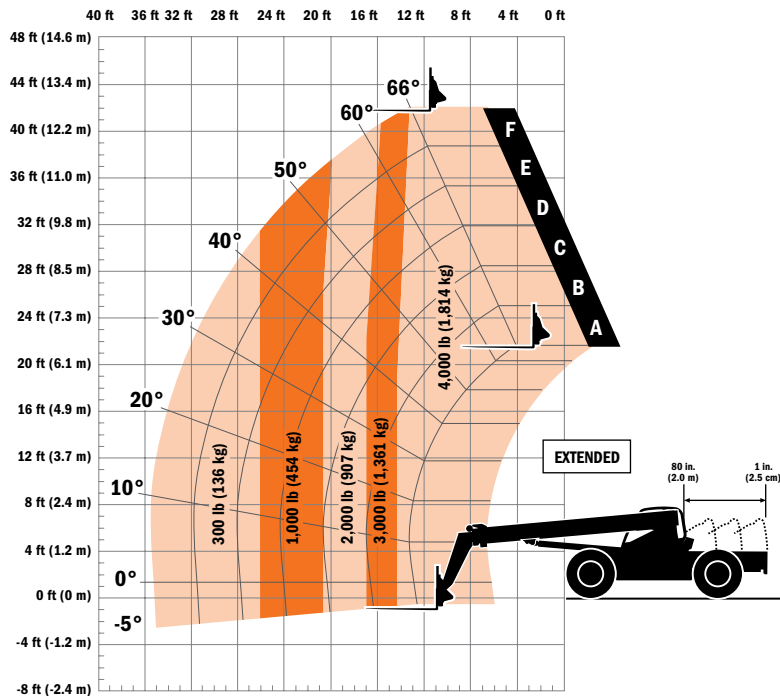
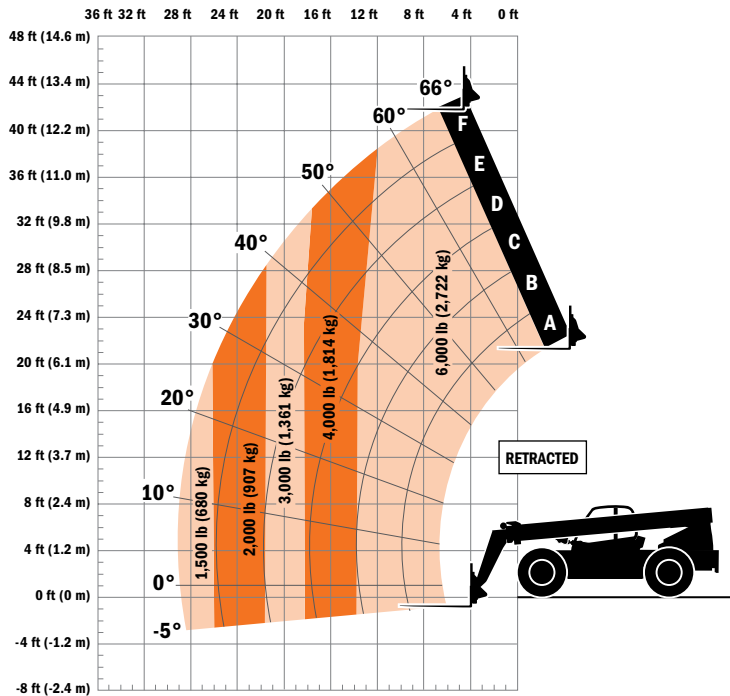
- Enclosed Cab**
- Air Conditioning**
- Cold Weather package**
- Work Lights**
- Road Lights**
- Rotating Beacon**
- Light Packages**
- Tire Options**
Foam-filled
Rock
Solid

Attachments

- Standard Carriage**
50 in. (1.3 m) or 60 in. (1.5m) or 72 in. (1.8 m)
- Side Tilt Carriage**
50 in. (1.3 m) or 60 in. (1.5 m) or 72 in. (1.8 m)
- Swing Carriage**
72 in. (1.8 m); 90 degrees
- Tower**
8 ft (2.4 m), 50 in. (1.3 m) Standard Carriage
- Pallet Forks**
2.36 x 4 x 48 in. (60 mm x 102 mm x 1.2 m)
2.36 x 5 x 48 in. (60 mm x 127 mm x 1.2 m)
2.00 x 6 x 72 in. (51 mm x 152 mm x 1.8 m)
- Lumber Forks**
1.75 x 7 x 60 in. (44 mm x 178 mm x 1.2 m)
2.36 x 6 x 60 in. (60 mm x 152 mm x 1.5 m)
- Cubing Forks**
2 x 2 x 48 in. (51 mm x 51 mm x 1.2 m)
- Material Bucket**
72 in. (1.8 m), 1.0 cu yd ((0.76 m³)
96 in. (2.4 m), 1.5 cu yd (1.15 m³)
102 in. (2.6 m), 2.0 cu yd (1.53 m³)
- Grapple Bucket**
96 in. (2.4 m), 1.75 cu yd (1.34 m³)
- Truss Boom**
12 ft (3.7 m), 2,000 lb (907 kg) capacity
15 ft (4.6 m), 2,000 lb (907 kg) capacity
12 ft (3.7 m) with winch, 2,000 lb (907 kg) capacity
- Fork Mounted Work Platform**
8 ft (2.4 m), 1,000 lb (455 kg) capacity
- Lifting Hook**



Model 644E-42 TELEHANDLER



Dimensions

Length (less forks)	253 in. (6.43 m)
Width	98 in. (2.48 m)
Height	95.5 in. (2.43 m)
Wheelbase	131 in. (3.32 m)
Ground Clearance	16 in. (406 mm)
Outside Turning Radius	148 in. (3.75 m)
Max. Reach from Front Tires to 24 in. (609 mm)	
Load Center	35.5 ft/29 ft (10.82 m/8.83 m)

IMPORTANT

Rated lift capacities shown are with machine equipped with carriage and pallet forks. The machine must be level on a firm surface with undamaged, properly inflated tires. Machine specifications and stability are based on rated lift capacities at specific boom angles and boom lengths. (If specifications are critical, the proposed application should be discussed with your dealer.)

DO NOT exceed rated lift capacity loads, as unstable and dangerous machine conditions will result.

DO NOT tip the machine forward to determine the allowable load.

Use only JLG approved attachments with proper material handler model/attachment load capacity charts displayed in the operator's cab. OSHA requires all rough terrain forklift operators be trained according to OSHA 29 CFR 1910.178 (1).



JLG Industries, Inc.

1 JLG Drive
McConnellsburg, PA 17233-9533
Telephone 717-485-5161
Toll-free in US 877-JLG-LIFT
Fax 717-485-6417
www.jlg.com

An Oshkosh Corporation Company

Due to continuous product improvements, JLG Industries reserves the right to make specification and/or equipment changes without prior notification. This machine meets or exceeds ASME B56.6-2005 as originally manufactured for intended applications.

Form No.: SS-L644E-42-0104-15M
Part No.: 3132500
Printed in USA
R071003



800-610-4101 • ActionRental.com